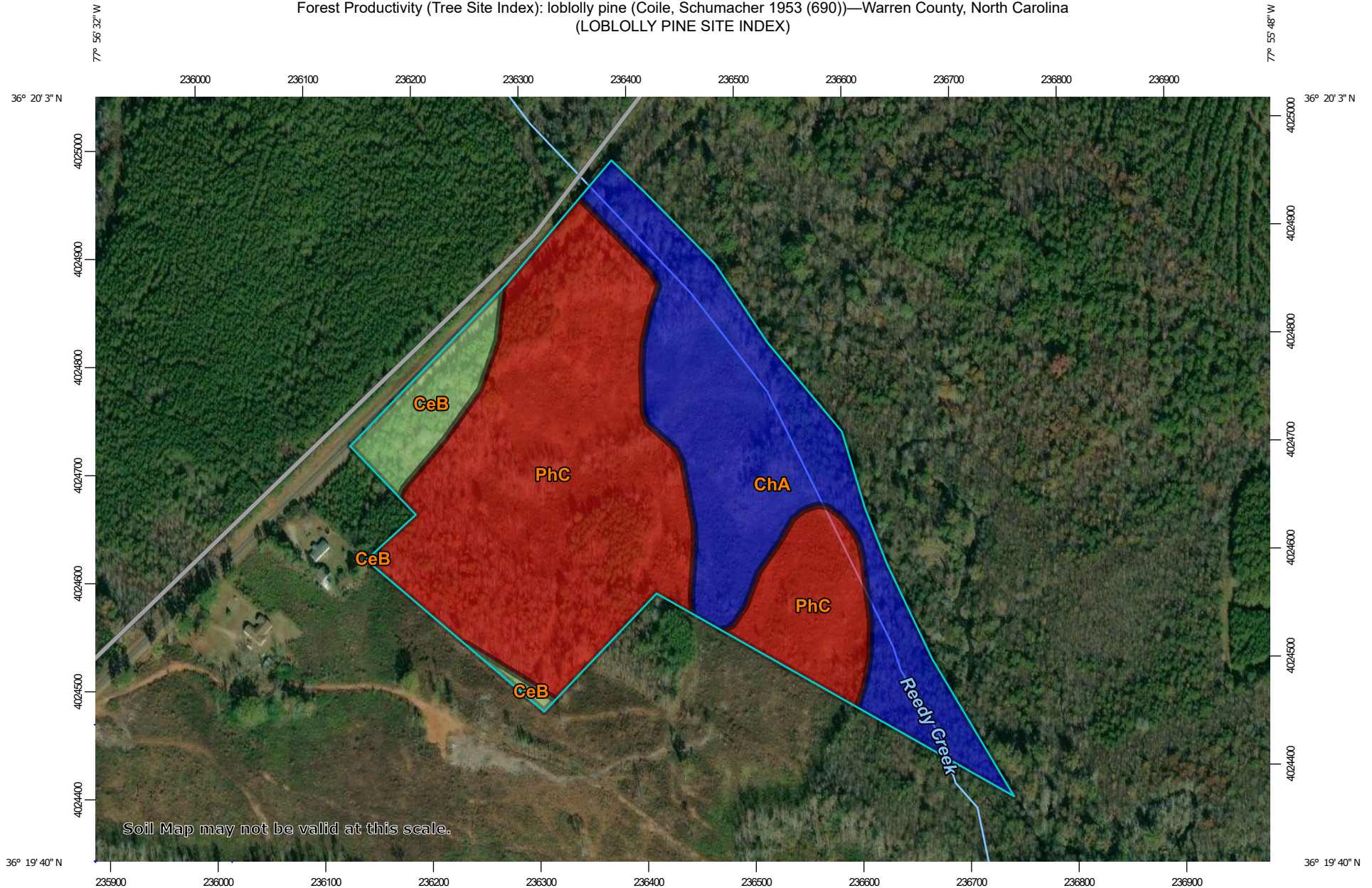
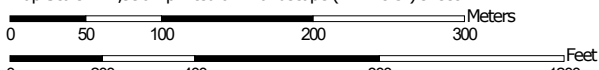


Forest Productivity (Tree Site Index): loblolly pine (Coile, Schumacher 1953 (690))—Warren County, North Carolina  
(LOBLOLLY PINE SITE INDEX)



Soil Map may not be valid at this scale.

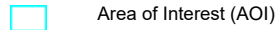
Map Scale: 1:4,990 if printed on A landscape (11" x 8.5") sheet.



Map projection: Web Mercator Corner coordinates: WGS84 Edge tics: UTM Zone 18N WGS84

## MAP LEGEND

### Area of Interest (AOI)



Area of Interest (AOI)

### Background



Aerial Photography

### Soils

#### Soil Rating Polygons



<= 78



> 78 and <= 83



> 83 and <= 95



Not rated or not available

#### Soil Rating Lines



<= 78



> 78 and <= 83



> 83 and <= 95



Not rated or not available

#### Soil Rating Points



<= 78



> 78 and <= 83



> 83 and <= 95



Not rated or not available

### Water Features



Streams and Canals

### Transportation



Rails



Interstate Highways



US Routes



Major Roads



Local Roads

## MAP INFORMATION

The soil surveys that comprise your AOI were mapped at 1:24,000.

Warning: Soil Map may not be valid at this scale.

Enlargement of maps beyond the scale of mapping can cause misunderstanding of the detail of mapping and accuracy of soil line placement. The maps do not show the small areas of contrasting soils that could have been shown at a more detailed scale.

Please rely on the bar scale on each map sheet for map measurements.

Source of Map: Natural Resources Conservation Service

Web Soil Survey URL:

Coordinate System: Web Mercator (EPSG:3857)

Maps from the Web Soil Survey are based on the Web Mercator projection, which preserves direction and shape but distorts distance and area. A projection that preserves area, such as the Albers equal-area conic projection, should be used if more accurate calculations of distance or area are required.

This product is generated from the USDA-NRCS certified data as of the version date(s) listed below.

Soil Survey Area: Warren County, North Carolina

Survey Area Data: Version 15, Sep 10, 2018

Soil map units are labeled (as space allows) for map scales 1:50,000 or larger.

Date(s) aerial images were photographed: Mar 15, 2016—Oct 26, 2017

The orthophoto or other base map on which the soil lines were compiled and digitized probably differs from the background imagery displayed on these maps. As a result, some minor shifting of map unit boundaries may be evident.

## Forest Productivity (Tree Site Index): loblolly pine (Coile, Schumacher 1953 (690))

Map unit symbol	Map unit name	Rating (feet)	Acres in AOI	Percent of AOI
CeB	Cecil sandy loam, 2 to 8 percent slopes	83	2.6	6.6%
ChA	Chewacla and Wehadkee soils, 0 to 2 percent slopes, frequently flooded	95	13.4	34.4%
PhC	Pacolet sandy loam, 8 to 15 percent slopes	78	23.0	59.0%
<b>Totals for Area of Interest</b>			<b>39.0</b>	<b>100.0%</b>

### Description

The "site index" is the average height, in feet, that dominant and codominant trees of a given species attain in a specified number of years. The site index applies to fully stocked, even-aged, unmanaged stands.

This attribute is actually recorded as three separate values in the database. A low value and a high value indicate the range of this attribute for the soil component. A "representative" value indicates the expected value of this attribute for the component. For this attribute, only the representative value is used.

### Rating Options

*Units of Measure:* feet

*Tree:* loblolly pine

*Site Index Base:* Coile, Schumacher 1953 (690)

*Aggregation Method:* Dominant Component

*Component Percent Cutoff:* None Specified

*Tie-break Rule:* Higher

*Interpret Nulls as Zero:* No