

SPRUCE CREEK LAND & TIMBER, LLC

440.94± ACRES

NOTTOWAY DIST., GREENSVILLE CO., VA

JULY 2018



1" = 1,200'
(APPROXIMATELY)

PARCEL "A" 313.54± ACRES

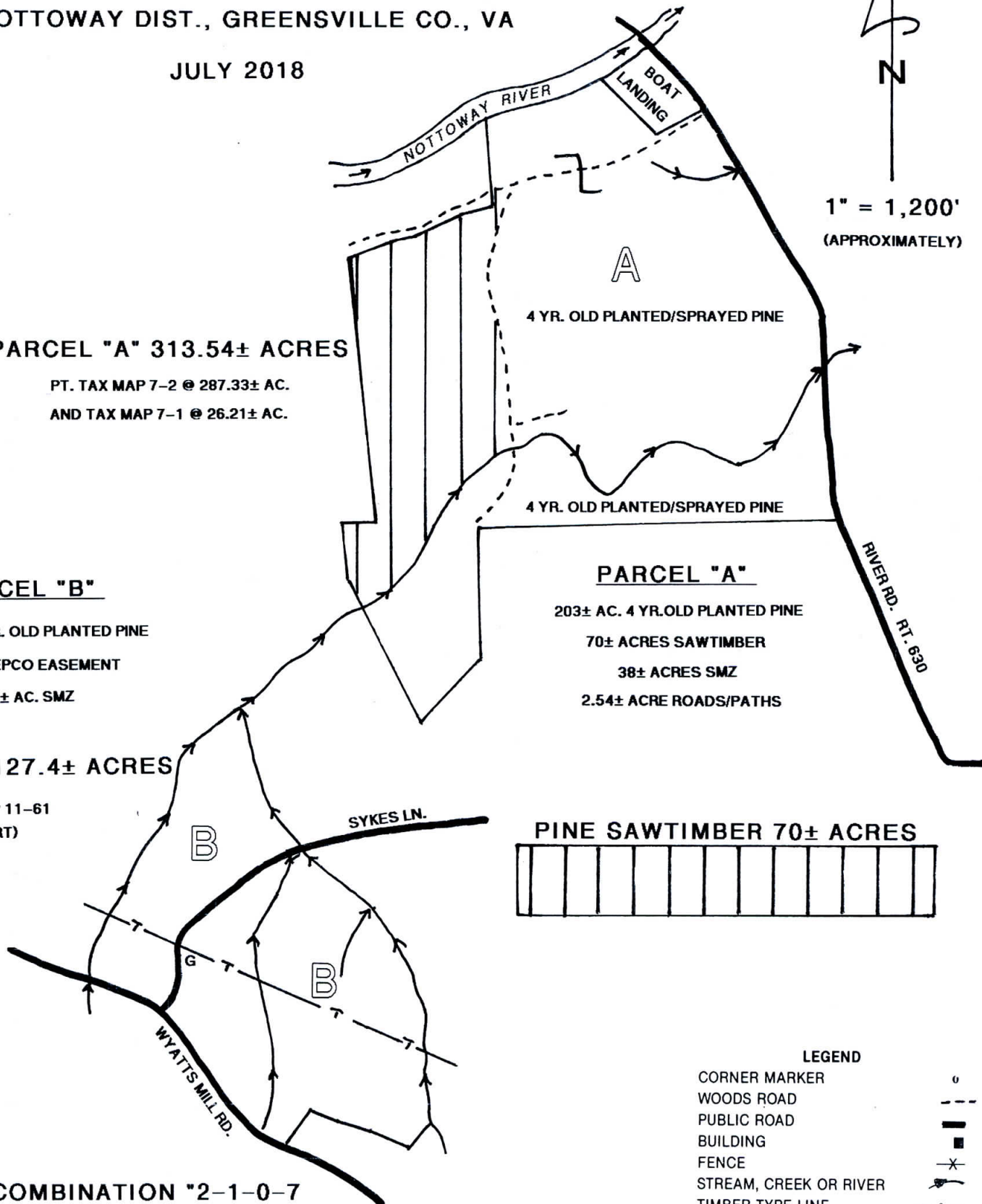
PT. TAX MAP 7-2 @ 287.33± AC.
AND TAX MAP 7-1 @ 26.21± AC.

PARCEL "B"

100± AC. 14 YR. OLD PLANTED PINE
6± AC. VEPCO EASEMENT
21.4± AC. SMZ

PARCEL "B" 127.4± ACRES

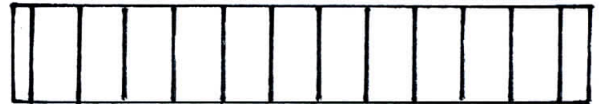
TAX MAP 11-61
(PART)



PARCEL "A"

203± AC. 4 YR. OLD PLANTED PINE
70± ACRES SAWTIMBER
38± ACRES SMZ
2.54± ACRE ROADS/PATHS

PINE SAWTIMBER 70± ACRES



LEGEND

CORNER MARKER	o
WOODS ROAD	- - -
PUBLIC ROAD	—
BUILDING	■
FENCE	-x-
STREAM, CREEK OR RIVER	~
TIMBER TYPE LINE	-•-
POWER LINE	-T-
SWAMP	∨
PINE SAWTIMBER	PST
HARDWOOD SAWTIMBER	HST
PINE PULPWOOD	PP
HARDWOOD PULPWOOD	HP
CHIP-N-SAW (PINE)	CNS

G - GATE - COMBINATION "2-1-0-7"



1123 Roanoke Avenue
P.O. Box 1645
Roanoke Rapids, NC 27870
Toll Free: 1-800-533-3754